

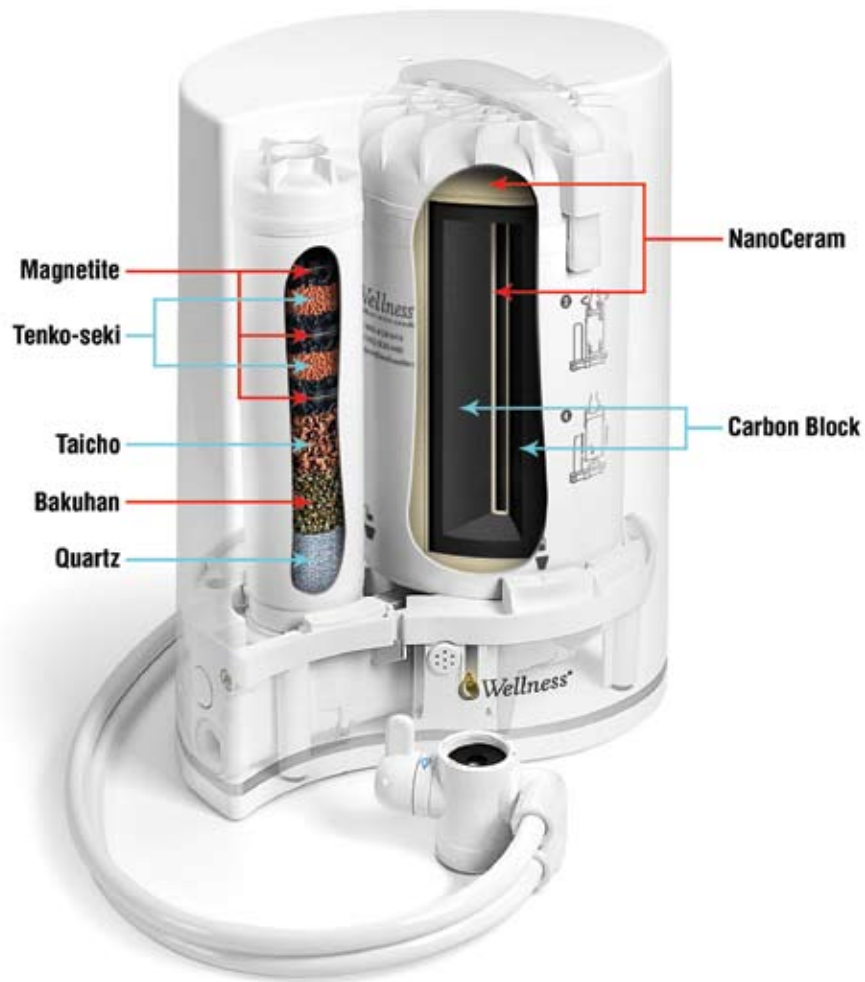
# The Wellness Kitchen User Guide & Warranty



**Wellness Enterprises, LLC**  
418 SW 140th Terrace, Newberry, FL 32669  
Phone: 352.333.0480 Fax: 352.333.0490  
E-mail: support@wellnessfilter.com

*Please check our web site for manual updates.*  
[wellnessfilter.com/support/downloads/](http://wellnessfilter.com/support/downloads/)





- 💧 **NanoCeram** - Independently tested to reduce Virus by 99.99% and Bacteria by 99.9999%
- 💧 **Carbon Block** - NSF Certified to reduce Chlorine, Chloramines, VOCs, THMs, MTBE, Heavy Metals, Sediment, Taste, Odor, and more (see performance data on page 8)
- 💧 **Magnetite** - Restructures water to increase solubility and reduces surface tension
- 💧 **Tenko-seki** - Adds reduced ions into the water, providing a natural anti-oxidant effect
- 💧 **Taicho** - Adds natural bacteriostatic and fungistatic minerals to water
- 💧 **Bakuhan** - Increases the alkalinity of water naturally by adding trace alkaline minerals
- 💧 **Quartz** - Adds trace levels of soluble silica to the water which acts as a catalyst, increasing the effect of the other enhancement media.

Congratulations on your purchase of the new Wellness Kitchen filter! The Wellness Kitchen is designed to provide you with the best filtered and enhanced water at your tap for years to come.

Please read this manual carefully before installing and using your Wellness Kitchen system and retain it for easy future reference. The instructions and safeguards enclosed help ensure your new Wellness Kitchen operates at peak efficiency for its entire life.

## Other Products by Wellness

### The Wellness Shower®

Did you know that your body can absorb up to 600% more contaminants in a 10-minute shower than it would by drinking the same water all day long? The Wellness Shower is the perfect partner to your new Wellness Kitchen. Combining the patented Wellness Enhancement Technology with industry leading NSF Certified performance, this revolutionary product out-performs all other shower filters on the market.

### The Wellness H2.O™ Bottle

You now have *The Best Source of Water on Earth* in your home, but what do you drink when you are away from home? If you prefer to have unlimited access to filtered water throughout the day, consider the Wellness H2.O Bottle, a portable filtration device that filters and enhances any source of regular tap water, producing better-than-bottled quality water on the go.

### The Wellness Home System

The ultimate water purification and enhancement system for your home. Imagine having better-than-bottled quality water flowing from every tap in your home; including the bath, shower, and garden. Because this unique system treats the water as it enters your home or office, you will have peace of mind knowing that your water is purified and enhanced.



# Installation — Above Sink

**BEFORE INSTALLATION: PLEASE READ THE IMPORTANT NOTES & WARRANTY INFORMATION ON PAGES 9 & 10 PRIOR TO PROCEEDING.**

The Wellness Kitchen diverter valve and connectors are designed to fit the majority of standard male and female faucets with removable aerators. Some faucets may require additional adaptors which may be purchased at your local hardware store. Diverter connector sizes are listed below for reference.

If you have a designer or commercial faucet, extendable hose or non-standard spout you may need to replace your faucet or install your Wellness Kitchen under your sink with the Under Sink Adaptor Kit - sold separately.

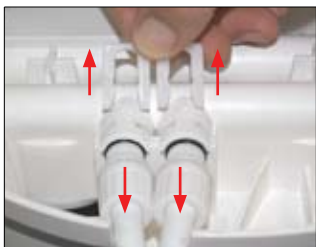


## Parts List

1. Diverter Valve
2. Horseshoe Clips
3. Tubing (3/8" ID)
4. Barbed Inlet / Outlet Fittings
5. Diverter Tightening Ring
6. Female Connector (55/64" 27 thread)
7. Male Adaptor (15/16" 27 thread)
8. Teflon Tape
9. Battery Pack

## Optional - Connecting Above Sink Tubing

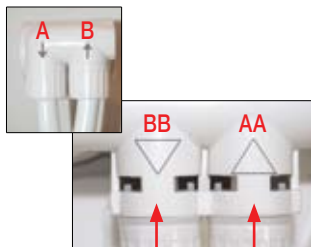
(for Above Sink conversions or Diverter Tubing Replacement)



### Disconnect Tubing

Place unit upside-down so base is visible and Inlet / Outlet connections are facing you. Remove horseshoe clips by pulling them upwards and set aside.

Remove Inlet / Outlet fittings by pulling away from connections.



### Connect Tubing

Connect tubing from Diverter Outlet (A) to Filter Inlet Connection (AA)  
Connect tubing from Diverter Inlet (B) to Filter Outlet Connection (BB)



### Secure Connections

Insert horseshoe clips into channels to secure Inlet / Outlet Fittings. They will snap into place. NOTE - Horseshoe clips will only insert 1 way.

# Installation - Above Sink



### Step 1. Remove Aerator

Unscrew the faucet aerator using your hand or a small tool such as pliers or a wrench.



### Step 2. Retain Washer

The aerator & washers may be needed later. Set these pieces aside for safe-keeping.



### Step 3. Cleaning

Clean the spout threads. To remove dirt, use an old toothbrush and flush with water.



### Step 4. Determine Faucet Type

**Female faucets** (threads *inside*) Use Female Connector with Male Adaptor  
**Male faucets** (threads *outside*) Use Female Connector



### Step 5a. Female Faucet

Attach **Male** adaptor to faucet by hand and tighten with coin. Proceed to Step 5b, attaching **Female** connector to **Male** adaptor instead of faucet.



### Step 5b. Male Faucet

Unscrew diverter tightening ring from diverter valve and slip (threads down) over **Female** connector. Attach **Female** connector to faucet by hand and tighten with coin.



**Handy Hint:** In some cases, plumbers Teflon® tape (supplied) may be needed to achieve a water-tight seal between the faucet and the connector or adaptor.



### Step 6. Attach Diverter

Press diverter valve up to base of Female connector and screw down the diverter tightening ring until it is finger tight. Slowly turn on cold water and check for leaks. If a leak occurs you may need to re-attach the diverter, connector, or adaptor.



### Step 7. Flush System

While the diverter is still on the filtered water position, run cold water for 2 minutes. Black dust will come out of the filtered water port as harmless excess carbon fines are shed.

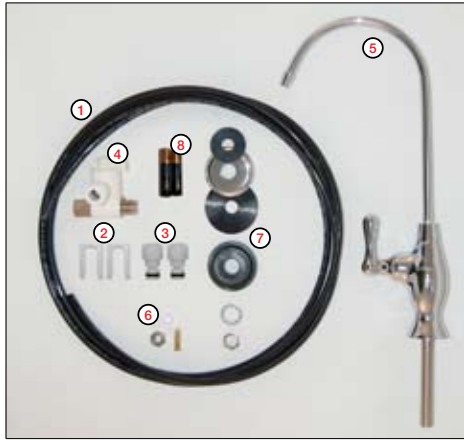
**Congratulations! Your Wellness Kitchen is ready for use.  
Please proceed to page 7 for Operation and F.A.Q.**

# Installation — Under Sink

# Installation — Under Sink

## BEFORE INSTALLATION: PLEASE READ THE IMPORTANT NOTES & WARRANTY INFORMATION ON PAGES 9 & 10 PRIOR TO PROCEEDING.

Please review all installation steps before you begin to ensure no conflicts exist with your desired location. Wellness strongly recommends a licensed and insured plumber is hired to connect this unit. Improper installation may void warranty.



### Parts List

1. Black Tubing (10', 3/8" OD)
2. Horseshoe Clips
3. Quick-connect Inlet / Outlet Fittings
4. Angle Stop Valve (3/8")
5. Auxiliary Faucet (3/8")
6. Faucet Compression Fittings (3 pieces)
7. Faucet Mounts (6 pieces)
8. Battery Pack



### Step 1. Install Fittings

Place unit upside-down so base is visible and Inlet and Outlet connections are facing you. Remove horseshoe clips by pulling them upwards and set aside.

**Optional:** If converting from an above sink Wellness Kitchen filter, remove Barbed Inlet / Outlet fittings by pulling away from connections.

Install quick-connect fittings into Inlet / Outlet connections and secure with horseshoe clips.

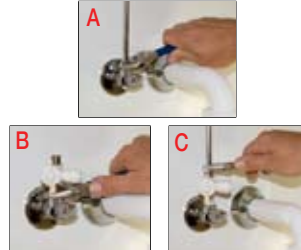
**Note:** Horseshoe clips will only insert 1 way.



### Step 2. Install Auxiliary Faucet

**Note:** See faucet installation instructions on packaging. Locate faucet and faucet mounts. Use sink auxiliary hole, remove a sink accessory or drill a 5/8" hole in your sink or countertop to accommodate the threaded pipe on the faucet. Install faucet with washers and tighten into place using the star washer and lock nut. Secure with wrench.

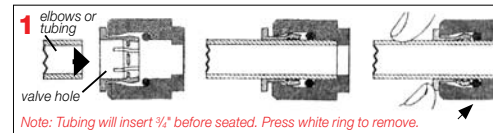
*Do not to overtighten.*



### Step 3. Install Angle Stop Valve

Ensure cold water valve is shut off fully. Turn on cold water faucet for a few seconds to relieve excess pressure.

- A. Disconnect cold water supply line from outlet of cold water valve.
- B. Connect female threads of angle stop valve to male threads of cold water valve. Secure with a wrench.
- C. Connect female threads of cold water supply line to male threads of angle stop valve. Secure with a wrench.



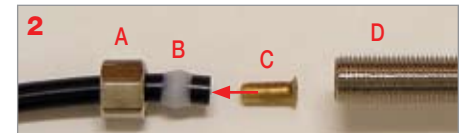
### Step 4. Inlet Connections

**Note:** Cartridge replacement requires removal of the Wellness Kitchen filter's cover. Ensure you have 27 inches of clearance available or install system without the cover.

**Note:** Inlet / Outlet Connections and Angle Stop Valve use quick-connect fittings. Tubing must be inserted fully into place or leakage will occur. See Diagram 1

Measure distance between angle stop valve and Wellness Kitchen filter. Cut a section of tubing to fit and connect one end of tubing to angle stop valve A.

Connect opposite end of tubing to the Inlet quick-connect fitting B (arrow towards filter).



### Step 5. Outlet Connections

Measure distance between Wellness Kitchen filter and auxiliary faucet. Cut remaining tubing to fit and connect one end of tubing to Outlet quick-connect fitting C (arrow away from filter).

**Note:** Faucet connection utilizes a compression fitting. See Diagram 2

Slip compression nut A and ferrule B over end of tubing. Press tube insert C into tubing completely so only flared top of C is visible. Connect compression nut (A) to faucet thread D and secure with wrench.

### Step 6. Check Connections

Turn angle stop valve to on position. Rotate auxiliary faucet handle to ON position (horizontal). Next, slowly turn on the cold water valve. Once water flows freely through the auxiliary faucet, turn the faucet off.

The system is now pressurized. Immediately check all connection points for leaks. If a leak occurs, shut off the cold water valve and attempt to tighten the fittings and connections. Then, go back to the beginning of step 5. If you are not able to isolate or repair the leak, contact customer service.

Run cold water for 2 minutes. Black dust will come out of the filtered water port as harmless excess carbon fines are shed.

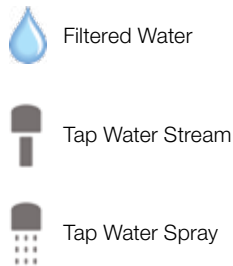
**Congratulations! Your Wellness Kitchen is ready for use. Please proceed to page 7 for Operation and F.A.Q.**

## Battery Installation

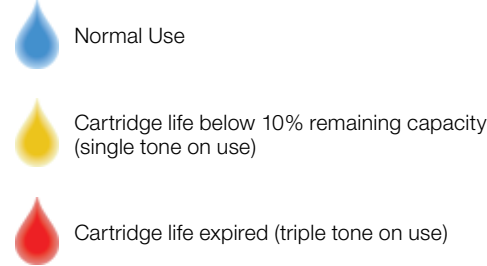
- Remove battery holder from filter base.
- Install 2 AAA batteries (included) into holder.
- Insert battery holder into filter base.
- Display light will flash Blue, Yellow, Red and a beep will sound.



## Diverter Valve Positions



## Performance Indicator Light



### Q: How do I change my cartridges?

**A:** Regular cartridge replacement is crucial to keeping your system functioning effectively. Instructions come with replacement cartridges and are available online. Basic instructions are also included directly on the filter cartridge itself.

### Q: Why does water continue to flow from the diverter valve after I turn the water off?

**A:** This is normal and occurs only with the above sink model. The difference in pressure between the incoming water and filtered water causes water to flow until pressure is equalized. You can turn the water off a few seconds early to compensate for this or convert to an under-sink model.

### Q: My water has a taste, odor, discoloration, and/or sediment problem. How will this affect my Wellness Kitchen filter?

**A:** All of these problems should be effectively reduced by the Wellness Kitchen filter, but depending on the severity of your problem they may significantly reduce filter cartridge life. If cartridge life is significantly reduced there are several inexpensive pre-filtration options that you can consider. Contact customer service for more information about pre-filters sold by other companies.

### Q: Why does my water look cloudy?

**A:** Until the filter becomes fully saturated, isolated air pockets can cause the water to look cloudy. In addition, excess particles of the natural volcanic minerals are flushed out on initial use. Both the minerals and oxygen are harmless and should dissipate with use.

### Q: Why does my water have a 'mineral' or 'metallic' taste?

**A:** The Wellness Kitchen filter does not remove healthy minerals, and in fact adds trace minerals to the water. For that reason your water will taste differently depending on the source to which it is connected. This 'mineral taste' is especially noticeable if you have been drinking de-mineralized water for an extended period of time. Your taste buds will readjust to mineralized water over time.

### Q: Should I flush my system if it has been sitting over night?

**A:** This is not necessary. However, if you prefer the freshest tasting water, allow your system to run for approximately 10 - 15 seconds in the filtered water position before taking your first drink.

### Q: What do I do after an extended period of non-use?

**A:** When using the filter for the first time after 2 weeks or more of non-use, to obtain the best possible drinking water quality we recommend running water through the filter for approximately 2 minutes. If the system has been offline for more than 1 month and you have concerns about the quality of your filtered water, please contact customer service.

Note: All tests completed in accordance with NSF/ANSI standards 42, 53, & P-231 for reduction of the substances listed below. The concentration of the individual substances in water entering the system was reduced to a concentration less than or equal to the permissible limit for water leaving the system, as specified in the NSF 42, 53, & P-231 standards.

CONTAMINANT	Removal	CONTAMINANT	Removal
ALACHLOR	>98%	HALOKETONES (HK):	-
ASBESTOS	>99.9%	1,1-DICHLORO-2-PROPANONE	99%
ATRAZINE	>97%	1,1,1-TRICHLORO-2-PROPANONE	96%
BACTERIA (Raoultella terrigena)	99.9999%	HEPTACHLOR	>99%
BENZENE	>99%	HEPTACHLOR EPOXIDE	98%
BROMODICHLOROMETHANE (TTHM)	>99.8%	HEXACHLOROBUTADIENE (Perchlorobutadiene)	>98%
BROMOFORM (TTHM)	>99.8%	HEXACHLOROCYCLOPENTADIENE	>99%
CARBOFURAN (Furadan)	>99%	LEAD (pH 6.5)	>99.3%
CARBON TETRACHLORIDE	98%	LEAD (pH 8.5)	>99.3%
CHLORAMINE as Aesthetic Effect (Monochloramine)	>97%	LINDANE	>99%
CHLORINE as Aesthetic Effect	>99%	MERCURY (pH 6.5)	>99%
CHLORDANE	>99.5%	MERCURY (pH 8.5)	>99%
CHLOROBEZENE (Monochlorobenzene)	>99%	METHOXYCHLOR	>99%
CHLOROPICRIN	99%	Methylbenzene (see TOLUENE)	>99%
CHLOROFORM (TTHM surrogate chemical)	>99.8%	Monochlorobenzene (see CHLOROBEZENE)	>99%
Cryptosporidium (CYST)	99.95%	MTBE (methyl tert-butyl ether)	>96.6%
CYST (Giardia; Cryptosporidium; Entamoeba; Toxoplasma)	99.95%	PARTICULATE (Class 1, Particles 0.5 TO <1 UM)	> 99%
2, 4 -D	98%	POLYCHLORINATED BIPHENYLS (PCBs, Aroclor 1260)	>99.9%
DBCP (see Dibromochloropropane)	>99%	PCE (see TETRACHLOROETHYLENE)	>99%
1,2-DCA (see 1,2-DICHLOROETHANE)	95%	PENTACHLOROPHENOL	>99%
1,1-DCE (see 1,1-DICHLOROETHYLENE)	>99%	Perchlorobutadiene (see HEXACHLOROBUTADIENE)	>98%
DIBROMOCHLOROMETHANE (TTHM)	>99.8%	Propylene Dichloride (see 1,2-DICHLOROPROPANE)	>99%
DIBROMOCHLOROPROPANE (DBCP)	>99%	SIMAZINE	>97%
o-DICHLOROBEZENE (1,2 Dichlorobenzene)	>99%	Silvex (see 2,4,5-TP)	99%
p-DICHLOROBEZENE (para-Dichlorobenzene)	>98%	STYRENE (Vinylbenzene)	>99%
1,2-DICHLOROETHANE (1,2-DCA)	95%	1,1,1-TCA (see 1,1,1 -TRICHLOROETHANE)	95%
1,1-DICHLOROETHYLENE (1,1-DCE)	>99%	TCE (see TRICHLOROETHYLENE)	>99%
CIS-1,2-DICHLOROETHYLENE	>99%	1,1,2,2- TETRACHLOROETHANE	>99%
TRANS-1,2- DICHLOROETHYLENE	>99%	TETRACHLOROETHYLENE	>99%
1,2-DICHLOROPROPANE (Propylene Dichloride)	>99%	TOLUENE (Methylbenzene)	>99%
CIS-1,3- DICHLOROPROPYLENE	>99%	TOXAPHENE	>92.9%
DINOSEB	99%	Toxoplasma (see CYSTS)	99.95%
EDB (see ETHYLENE DIBROMIDE)	>99%	2,4,5-TP (Silvex)	99%
ENDRIN	99%	TRIBROMOACETIC ACID	>98%
Entamoeba (see CYSTS)	99.95%	1,2,4 TRICHLOROBEZENE (Unsymtrichlorobenzene)	>99%
ETHYLBENZENE	>99%	1,1,1-TRICHLOROETHANE (1,1,1-TCA)	95%
ETHYLENE DIBROMIDE (EDB)	>99%	1,1,2-TRICHLOROETHANE	>99%
Furadan (see CARBOFURAN)	>99%	TRICHLOROETHYLENE (TCE)	>99%
Giardia Lambliia (see CYST)	>99.95%	TRIHALOMETHANES (TTHM)	>95%
HALOACETONITRILES (HAN)	-	TURBIDITY	>99%
BROMOCHLOROACETONITRILE	98%	VIRUS (MS2 Bacteriophage Virus Surrogate)	99.99%
DIBROMOACETONITRILE	98%	Vinylbenzene (see STYRENE)	>99%
DICHLOROACETONITRILE	98%	XYLENES (TOTAL)	>99%
TRICHLOROACETONITRILE	98%		

# IMPORTANT NOTICES & WARNINGS:

## FAILURE TO OBSERVE THESE NOTICES MAY VOID PRODUCT WARRANTIES AND FILTRATION PERFORMANCE GUARANTEES

1. Wellness Enterprises, LLC is not liable for any and all damage to any property or dwelling or any expense caused by or related to a leak in this or any products supplied by Wellness Enterprises, LLC. It is strongly recommended that you install an automatic leak detector and shutoff valve.
2. Do not use hot water above 100° F. with this filter. Hot water use could damage your filter. If accidental exposure to hot water occurs, flush your filter with cold water immediately.
3. Do not use with water that is microbiologically unsafe or of unknown quality without adequate disinfection before or after the system.
4. Filter life will vary in proportion to the amount of water used and the level of impurities in the water being processed. For optimum performance, it is essential that the filter be replaced on a regularly scheduled basis as follows: (a) annually; (b) when the unit's rated capacity has been reached; (c) the flow rate diminishes; (d) the filter becomes saturated with bad tastes and odors.
5. The Wellness Kitchen includes a capacity monitor that automatically flashes blue during use, yellow for the last 10% of capacity, and red when it is time to change your filter.
6. In compliance with New York law, it is recommended that before purchasing a water treatment system, NY residents have their water supply tested to determine their actual water treatment needs. Please compare the capabilities of the Wellness Kitchen with your actual water treatment needs.
7. Check for compliance with state and local laws and regulations.
8. While testing was performed under standard laboratory conditions, actual performance may vary.
9. Chloroform was used as a surrogate for claims of reduction of VOCs. The Wellness Kitchen tested at >99.8% actual reduction of Chloroform. Percent reduction shown herein reflects the allowable claims for VOCs as per tables in the NSF 52 Standard.
10. The list of substances which the treatment device reduces does not necessarily mean that these substances are present in your tap water.

## CUSTOMER SERVICE

**USA CALL: 1.800.428.9419**

**International Customers Call: +1 352.333.0480**

Before calling Customer Service, please review this instruction manual carefully. However, if a solution cannot be found, do not attempt to make repairs yourself, please call Customer Service.

**If you have questions regarding performance or use of your Wellness Kitchen, please call us at the numbers above, visit our web site at [wellnessfilter.com](http://wellnessfilter.com), or e-mail us at [support@wellnessfilter.com](mailto:support@wellnessfilter.com).**

# One Year Limited Warranty

WELLNESS ENTERPRISES, LLC warrants The Wellness Kitchen for one (1) year from the date of purchase against all defects in materials and workmanship when installed and used in compliance with this Installation Manual.

To allow WELLNESS ENTERPRISES, LLC to record your ownership of this product, start your warranty coverage cycle, and send you any applicable product reports or announcements please complete and return the attached Warranty Information Card. You should also keep this copy for your records. The Warranty Card must be signed and returned within 30 days of purchase in order to validate warranty.

WELLNESS ENTERPRISES, LLC will replace or repair any part which, in our opinion, is defective, if the filter, furnishings, and fixtures have not been subjected to tampering, alteration, or improper use or transportation after delivery and have not been repaired by anyone except WELLNESS ENTERPRISES, LLC or an authorized representative. WELLNESS ENTERPRISES, LLC's obligation does not include any costs related to shipping and transportation. WELLNESS ENTERPRISES, LLC is not responsible for damage in transit, the customer should present claims for such damage to the carrier.

WELLNESS ENTERPRISES, LLC makes no warranties, expressed or implied, including, without limitation, any warranties of fitness or merchantability except as expressly set forth above. WELLNESS ENTERPRISES, LLC shall not be liable for any anticipated or lost profits; incidental damages, consequential damages, costs, time charges, or other losses incurred in connection with the purchase, installation, repair, or operation of the filter, and we do not authorize anyone to assume for WELLNESS ENTERPRISES, LLC any liability in connection with the filter or any part thereof. WELLNESS ENTERPRISES, LLC reserves the right to modify the design of our products at any time without notice.

This warranty shall NOT apply to:

1. Failures resulting from use of water not suited for drinking, as outlined in current AWWA guidelines\*.
2. Failures due to normal wear, accident, misuse, abuse, negligence, or contamination in source water supplies.
3. Damage due to failure to follow operating instructions and maintenance requirements.
4. Products that are altered, modified, or serviced in a manner not authorized by WELLNESS ENTERPRISES, LLC in writing.
5. Failure of goods due to use other than what was originally intended.
6. Damage due to failure to follow published laws, regulations, and codes.

For servicing under this warranty, contact the Customer Service Department at 1-800-428-9419 and explain the problem in detail. Repair or replacement of the filter by WELLNESS ENTERPRISES, LLC requires the submission of this Warranty and may require the return of the filter to WELLNESS ENTERPRISES, LLC at your cost.

\* For information regarding current AWWA standards, please visit <http://www.awwa.org>

Wellness Kitchen - Technical Specifications	
Filtration media	1 Micron (absolute) Carbon block 0.01 Micron (nominal) NanoCeram Wrap
Enhancement media	Magnetite & Ceramic Magnets, Tenko-Seki® Bakuhan® Stone, Taicho® Stone, Quartz
Filtering flow rate	0.75 - 1.50 GPM (at 40 psi)
Maximum pressure (psi)	100 psi
Rated life	1,200 gallons / 12 months
Operating temperatures	40°F. min - 100°F. max
Body dimensions	11.5" Wide x 8" Deep x 13.5" High Hose Length: 54"
Body weight (dry)	12.5 Pounds
Product warranty	One year for workmanship & material defects